

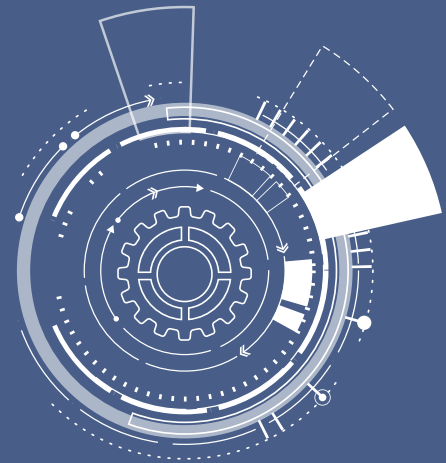


EDUCAFÉ'S EMPLOYABILITY ENHANCEMENT FOR ENGINEERS



EduE3

A Comprehensive Training Needs Analyzer for Employability for Engineering Students



Individuals have their likes and dislikes, strengths and drawbacks, skills and inabilities – in fact, their own unique personality. Understanding one's strengths and attempting to work on one's developmental needs is the first step towards self development and enhancing employability.

All this is achieved in a scientific manner through the EduE3 - Educafé's proprietary training assessment tool.

Combined with a guidance session conducted by professional psychologists, it helps students to improve in life and do even better, by providing them with an insight into maximizing their individual strengths and minimizing their individual weaknesses.

EduE3 ASSESSMENT PARAMETERS

The EduE3 is an online test. The test is in both a multiple-choice format as well as a rating scale. It is applicable for Engineering students. The detailed report generated will provide them with key development areas to enhance their employability opportunities.

The Competencies assessed are:

- Personal Skills / Life Skills: The skills assessed are in the areas of self understanding, problem solving & decision making, goal setting, motivation and leadership skills and Creative Problem Solving
- Communication Skills: the skills assessed are body language, presentation skills, verbal & non verbal communication and English skills
- Employability Skills: The skills assessed are résumé writing, facing interviews, group discussion and stress management.

EduE3 ASSESSMENT REPORT

The assessment report reveals the individual's

- Strengths: areas where the individual's ratings are high and no training is required.
- Immediate training needs: areas where the individual's ratings are low and training is required, so as to improve employability.
- Possible training needs: areas where the individual's ratings are average; training is not the first priority, however to do well in their academics and in life, training is recommended

REPORTS

Two reports are generated in EduE3 assessment

- A summary report or short version which gives a graphical representation of the student's profile and lists strengths and training needs. This report is used to guide students on goal planning and steps forward.
- A more comprehensive version which gives a detailed description of each skill set assessed, as well as their strengths and training requirements.

In all, 11 skills sets are assessed. Each student's underlying stress factors (both facilitating and debilitating stress) are assessed separately.

EMPLOYABILITY GUIDANCE SESSION

Once the assessment is over, the report is mailed to each student.

A web based 'Employability guidance session' can be scheduled where the report is discussed in detail and doubts and clarifications are addressed.

Educafé's Employment Enhancement for Engineers
is the key to help every individual get a JOB



Educafé Student Solutions Pvt Ltd
12/A, 80 Feet Rd,
HMT Layout, RT Nagar,
Bengaluru, Karnataka 560032 | +91 80 4124 4184

query@educafe.com | www.educafe.com

Contact:

Dhirendra R, +91 92430 99999